

# KANTO

Design D. Dolcini

CREDENZA | SIDEBBOARD

2020



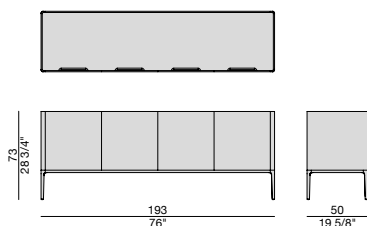
Credenza in noce canaletta o frassino con base metallica realizzata in esclusiva tramite pressofusione di alluminio, finitura nero opaco. Dotata di quattro ante a battente e due scomparti con due ripiani in vetro trasparente (spessore 8 mm).

Sideboard in canaletta walnut or ash with matt black metal base, obtained from company designed die casting. Equipped with four hinged doors and two compartments with two shelves in clear glass (thickness 8 mm).

Sideboard aus Nussbaum canaletta, oder Esche mit einem mattschwarzen Untergestell aus Metall. Das Untergestell wird durch einne Entwurf von Porada im Druckgußverfahren hergestellt. Das Sideboard verfügt über 4 Flügeltüren mit zwei Fächer mit jeweils 2 Böden aus Klarglas (8mm).

Buffet en noyer canaletta ou frêne avec piétement réalisé en exclusive en aluminium moulé sous pression, en finition noir mat. Équipé avec quatre portes à charnière et deux compartiments avec deux étagères en verre transparent (épaisseur 8 mm).

Aparador en nogal canaletta o fresno con base de metal realizada con fundición de aluminio, acabado negro mate. Equipada con cuatros puertas batientes y dos compartimientos con estantes de cristal transparente (espesor 8 mm).

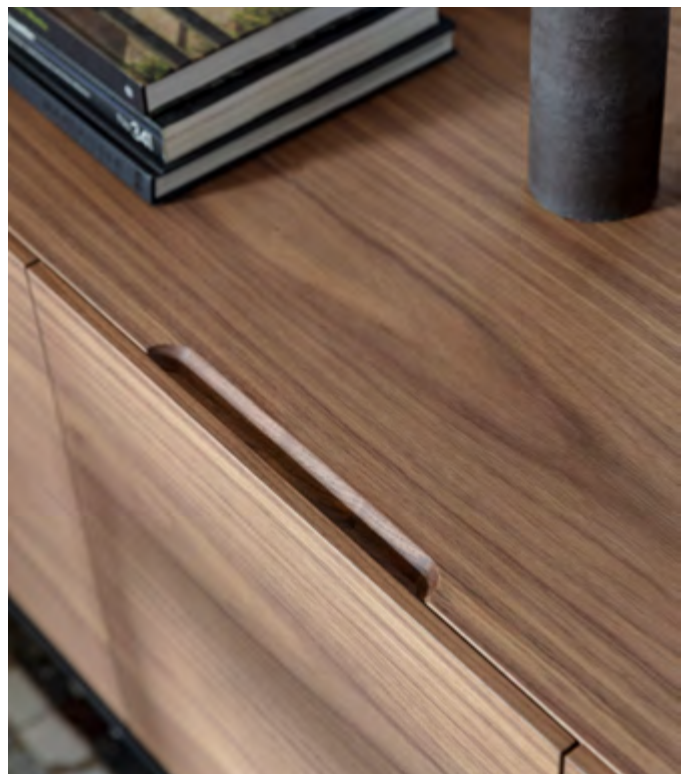


# KANTO

Design D. Dolcini

CREDENZA | SIDEBBOARD

2020



## Essenze | Wood



Noce canaletta  
*Canaletta walnut*

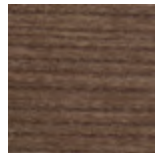
## Essenze | Wood



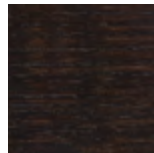
Frassino naturale  
*Natural ash*



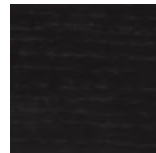
Frassino  
tinto canapa  
*Ash canapa stained*



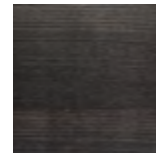
Frassino  
tinto noce canaletta  
*Ash canaletta walnut  
stained*



Frassino  
tinto moka  
*Ash moka stained*



Frassino  
tinto wengè  
*Ash wengè stained*



Frassino  
tinto grigio  
*Ash grey stained*

## Metallo | Metal



Nero opaco  
*Matt black*