

NOEMI

Design Marelli & Molteni

SEDIA | CHAIR

2022



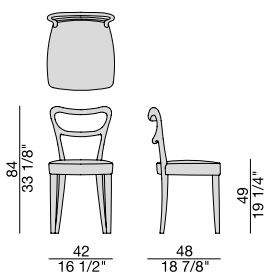
Sedia con struttura in massello di noce canaletta e rivestimento nei tessuti della collezione.

Chair with frame in solid canaletta walnut and cover in the fabrics of the collection.

Stuhl mit Gestell aus massivem Nussbaum Canaletta und Bezug in den Stoffen der Kollektion.

Chaise avec structure en noyer canaletta massif et revêtement dans les tissus de la collection.

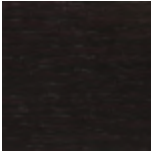
Silla con estructura en nogal canaletta macizo y revestimiento en las telas de la colección.



Essenze | Wood



Noce canaletta
Canaletta walnut

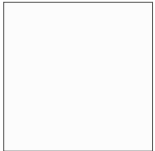


Noce canaletta
tinto moka
Canaletta walnut
moka stained

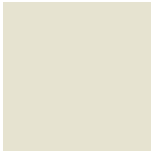


Noce canaletta
tinto wengè
Canaletta walnut
wengè stained

Laccato opaco poro chiuso | Matt Lacquered closed pore



Bianco
White
(RAL 9016)



Avorio
Ivory
(RAL 1013)



Argilla
Argilla
(RAL 7006)



Cioccolato
Chocolate
(RAL 8019)



Nero
Black
(RAL 9005)



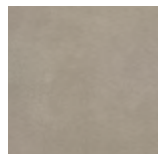
Iron
Iron
(RAL 7011)



Granata
Granata
(NCS S4050Y90R)

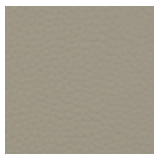
Pelle | Leather

Cat. LUX



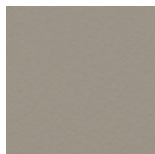
Nabuk

Cat. PLUS



Pelle PLUS

Cat. EXTRA



Pelle EXTRA

Cat. PELLE



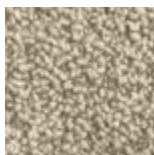
Pelle

Rivestimento | Cover

Cat. A

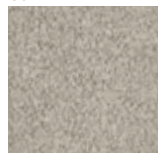


Twist

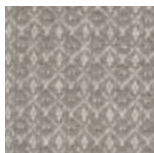


Zante

Cat. B



Bouclage



Motley



Tammy



Rabat

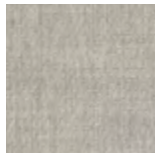
Cat. C



Armam



Ikat



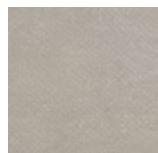
Lint



Loom



Madras



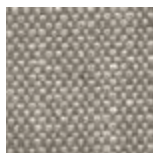
Moleskin



Moran



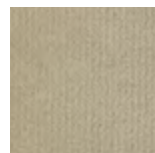
Patch



Silesia

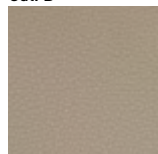


Serge

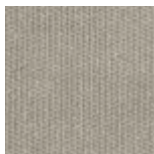


Velvet

Cat. D



Paros
eco leather



Range

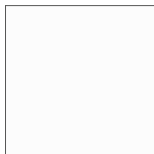


Tress

Cat. E



Dorian



In Bianco/Calico

Cat. COM

Disponibile con tessuto fornito dal cliente.

Available with fabric supplied by the customer.

Verfügbar mit Kundenstoff.

Disponibile avec tissu du client.

Disponibile con tela suministrada por el cliente.